

2009



Emerging issues in fisheries

More than 41 million fishers and fish farmers, most of them from Asia, produce annually nearly 142 million metric tonnes of fish – a major source of food, nutrition and livelihoods for the world's 6.5 billion people. But fishers and fisheries are today in crisis, because of resource depletion, falling catches, pollution and other problems. These need to be tackled through systematic management, scientific studies, better governance and global co-operation.

This calendar highlights some of the emerging issues in fisheries today through words and sketches.



Post Bag No. 1054, 91 St. Mary's Road, Abhiramapuram, Chennai 600 018, India.

Phone: 91-44-24936188, 24936294; Fax: 91-44-24936102

E-mail: info@bobbigo.org; Website: www.bobbigo.org

2009

January

Sun		11	25
Mon		12	26
Tue		13	27
Wed		14	28
Thu	1	15	29
Fri	2	16	30
Sat	3	17	31
Sun	4	18	
Mon	5	19	
Tue	6	20	
Wed	7	21	
Thu	8	22	
Fri	9	23	
Sat	10	24	



Good governance

Sound resource management, proper regulation, promoting the Code of Conduct for Responsible Fisheries, encouraging a stakeholder approach to production and management, partnership – these are facets of good governance in fisheries – which in turn is essential for sustainability.

2009 February

Sun	8	22
Mon	9	23
Tue	10	24
Wed	11	25
Thu	12	26
Fri	13	27
Sat	14	28
Sun	1	15
Mon	2	16
Tue	3	17
Wed	4	18
Thu	5	19
Fri	6	20
Sat	7	21



Health and working conditions of fishers

Those who practice the world's most hazardous profession need a protective regimen from both government and industry. It should ensure safety at sea through the right craft and gear and safety equipment and tools on board. It should also provide access to basic health care, housing and social security.

2009 March

Sun	8	22	
Mon	9	23	
Tue	10	24	
Wed	11	25	
Thu	12	26	
Fri	13	27	
Sat	14	28	
Sun	1	15	29
Mon	2	16	30
Tue	3	17	31
Wed	4	18	
Thu	5	19	
Fri	6	20	
Sat	7	21	



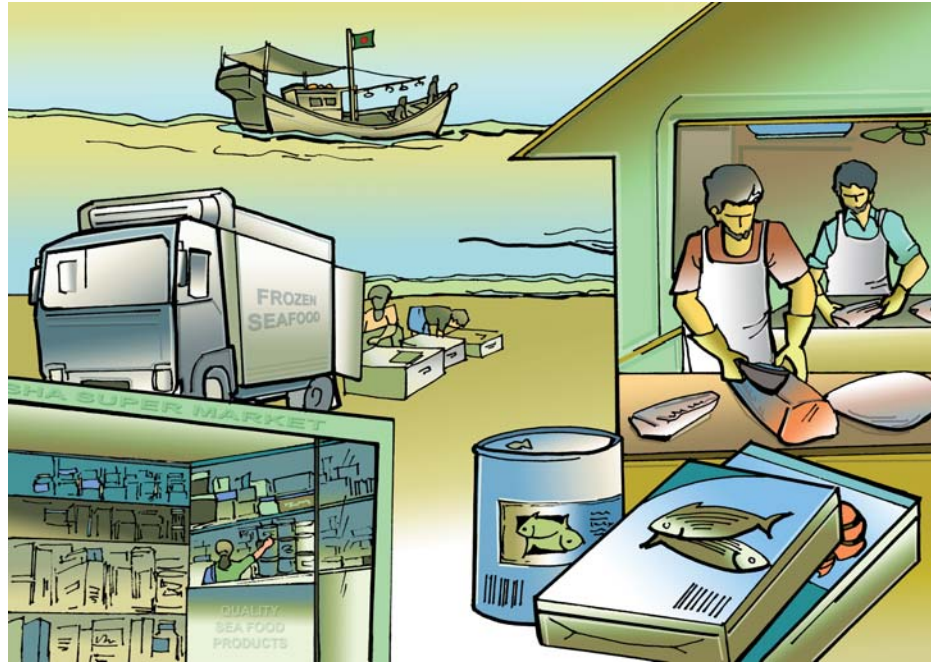
Diversifying livelihoods

With too many fishers chasing too few fish, fisher catches and incomes are plunging. Fishers must be encouraged to take up other occupations. They need education, skill training in various trades, and credit.

Women need special schemes. New livelihood options will improve the health of both fishers and fisheries.

2009
April

Sun	5	19	
Mon	6	20	
Tue	7	21	
Wed	8	22	
Thu	9	23	
Fri	10	24	
Sat	11	25	
Sun	12	26	
Mon	13	27	
Tue	14	28	
Wed	1	15	29
Thu	2	16	30
Fri	3	17	
Sat	4	18	



Eco-labeling and certification

An eco-label on a product is a badge of goodness – of compliance with environmental standards. The labelling is done by independent bodies. Eco-labelling practices strengthen the sustainability of fisheries. They present challenges as well as opportunities for fishers, processors and retailers.



2009
May

Sun	10	24	
Mon	11	25	
Tue	12	26	
Wed	13	27	
Thu	14	28	
Fri	1	15	29
Sat	2	16	30
Sun	3	17	31
Mon	4	18	
Tue	5	19	
Wed	6	20	
Thu	7	21	
Fri	8	22	
Sat	9	23	



Illegal, unregulated and unreported fishing

IUU fishing is carried out by rogues and pirates of the sea. It includes fishing without a license, misreporting of catches and use of illegal gear. IUU fishing is said to cost billions of dollars and thousands of jobs, and accounts for 25% of total catches in some fisheries. Cooperation and collective action is a must to eliminate IUU fishing.

2009
June

Sun	7	21	
Mon	8	22	
Tue	9	23	
Wed	10	24	
Thu	11	25	
Fri	12	26	
Sat	13	27	
Sun	14	28	
Mon	1	15	29
Tue	2	16	30
Wed	3	17	
Thu	4	18	
Fri	5	19	
Sat	6	20	



Climate change

Climate change can raise sea temperatures, unleash floods and cyclones, it can cause many fish species to vanish, others to migrate to distant climes. It can threaten livelihoods and food supplies. It can aggravate poverty and diseases. A global alliance to combat the effects of climate change is urgent and imperative.

2009

July

Sun	5	19
Mon	6	20
Tue	7	21
Wed	8	22
Thu	9	23
Fri	10	24
Sat	11	25
Sun	12	26
Mon	13	27
Tue	14	28
Wed	1	29
Thu	2	30
Fri	3	31
Sat	4	18

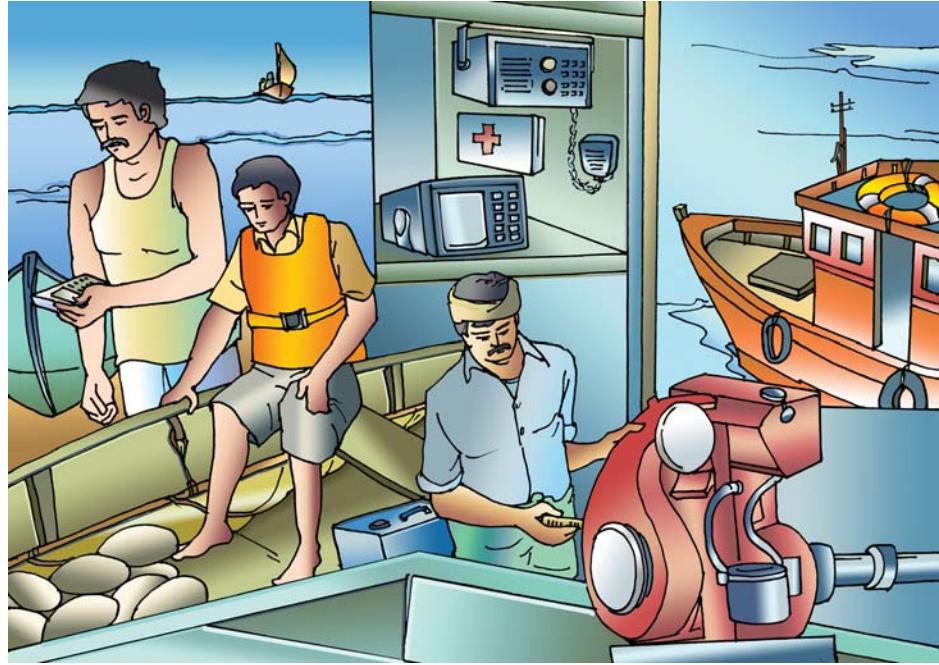


Monitoring, control and surveillance (MCS)

The goal of MCS is sound utilization of resources. States should keep track of fishing effort and its impact on resources; impose rules and controls for exploitation of resources; and ensure compliance with such controls. MCS involves data collection, decision-making and implementation.

2009 August

Sun	9	23	
Mon	10	24	
Tue	11	25	
Wed	12	26	
Thu	13	27	
Fri	14	28	
Sat	1	15	29
Sun	2	16	30
Mon	3	17	31
Tue	4	18	
Wed	5	19	
Thu	6	20	
Fri	7	21	
Sat	8	22	

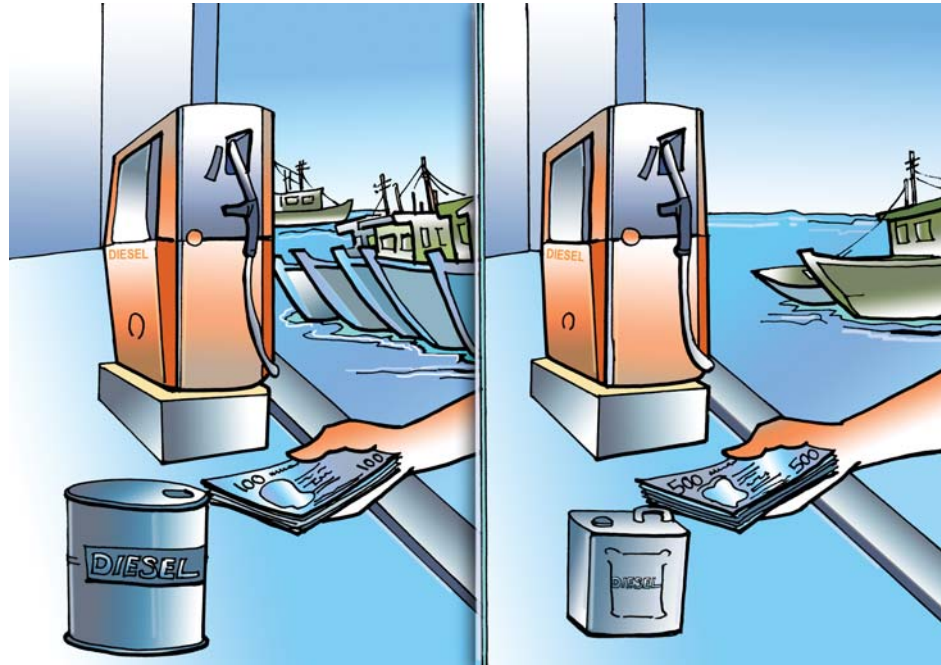


Safety at sea

Fishing is the most hazardous profession today. Improving safety at sea calls for many-pronged effort that entails prevention, awareness and mitigation. It requires sound fisheries management, regulations on fishing vessels, training, co-operation among all stakeholders, and strengthening of the entire safety culture in fisheries.

2009 September

Sun	6	20	
Mon	7	21	
Tue	8	22	
Wed	9	23	
Thu	10	24	
Fri	11	25	
Sat	12	26	
Sun	13	27	
Mon	14	28	
Tue	1	15	29
Wed	2	16	30
Thu	3	17	
Fri	4	18	
Sat	5	19	



Fuel price hike

Fishers get hit by a double whammy. While catches and incomes fall, costs go up – particularly that of fuel. Fishers have to curtail fishing trips and spend more money on fuel, which adds to their hardships. The government, the fishing industry and fisher co-operatives or unions, must come together and devise coping strategies for fishers.

2009
October

Sun	11	25	
Mon	12	26	
Tue	13	27	
Wed	14	28	
Thu	1	15	29
Fri	2	16	30
Sat	3	17	31
Sun	4	18	
Mon	5	19	
Tue	6	20	
Wed	7	21	
Thu	8	22	
Fri	9	23	
Sat	10	24	

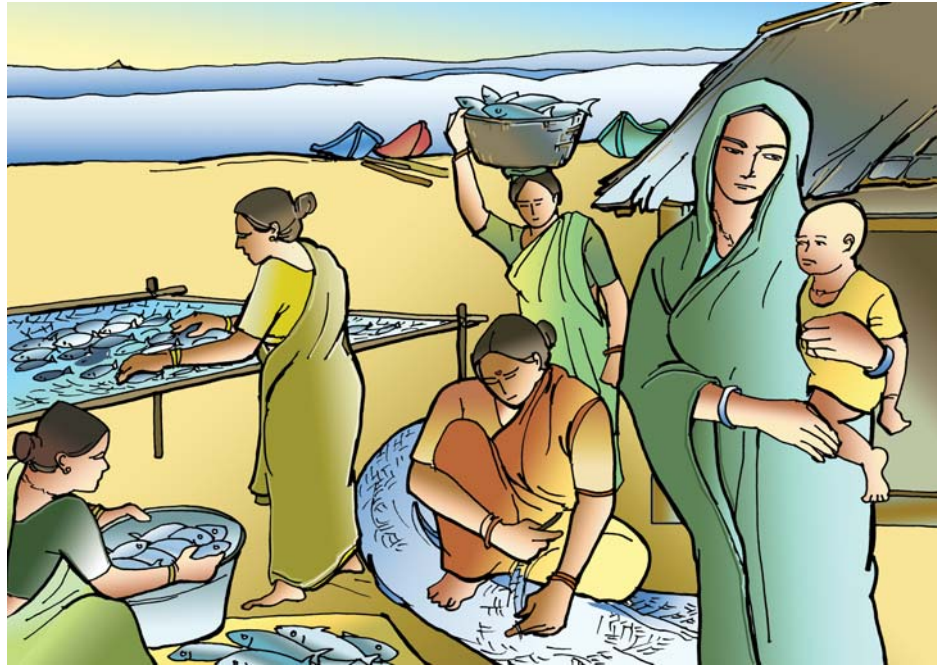


Hygiene and food safety

Providing consumers with safe and good-quality fish means ensuring hygienic practices at all stages of the food chain – on-board, during transportation, processing, storage and distribution. Contamination should be prevented. Facilities should be available for cleaning, sanitation, temperature control, waste management.

2009 November

Sun	8	22	
Mon	9	23	
Tue	10	24	
Wed	11	25	
Thu	12	26	
Fri	13	27	
Sat	14	28	
Sun	1	15	29
Mon	2	16	30
Tue	3	17	
Wed	4	18	
Thu	5	19	
Fri	6	20	
Sat	7	21	



Recognizing the role of women in fisheries

Women play multiple roles in fisheries. They are not merely wives, mothers and home-makers, but also take part in harvesting, processing and marketing of fish. They go through a dawn-to-midnight work schedule, yet win no recognition. Their role needs to be recognized to make them equal partners in the development of fisheries.

2009
December

Sun	6	20	
Mon	7	21	
Tue	8	22	
Wed	9	23	
Thu	10	24	
Fri	11	25	
Sat	12	26	
Sun	13	27	
Mon	14	28	
Tue	1	15	29
Wed	2	16	30
Thu	3	17	31
Fri	4	18	
Sat	5	19	



Improving awareness and knowledge amongst fishers

In a world of increasing complexity, fishers need to supplement their traditional knowledge with scientific knowledge, to the extent possible, on various aspects of fishery management and sustainable use of the resources. Fisheries managers must produce easy-to-absorb literature and audio-visual materials on fisheries for the fishers.

Bay of Bengal Programme Inter-Governmental Organisation (BOBP-IGO) is a unique regional fisheries body that assists member-countries (Bangladesh, India, Maldives, Sri Lanka) in increasing livelihood opportunities, improving the quality of life of small-scale fisherfolk and promoting responsible fishing practices and environmentally sound programme (<http://www.bobpigo.org>).



*Published by Y S Yadava for BOBP-IGO
Design and Sketches: S Jayaraj
Printed at Nagaraj & Co., Pvt. Ltd, Chennai.*

JANUARY						FEBRUARY						MARCH						APRIL					
SUN	31	3	10	17	24	SUN	7	14	21	28	SUN	7	14	21	28	SUN	4	11	18	25			
MON	4	11	18	25	MON	1	8	15	22	MON	1	8	15	22	29	MON	5	12	19	26			
TUE	5	12	19	26	TUE	2	9	16	23	TUE	2	9	16	23	30	TUE	6	13	20	27			
WED	6	13	20	27	WED	3	10	17	24	WED	3	10	17	24	31	WED	7	14	21	28			
THU	7	14	21	28	THU	4	11	18	25	THU	4	11	18	25	THU	1	8	15	22	29			
FRI	1	8	15	22	29	FRI	5	12	19	26	FRI	5	12	19	26	FRI	2	9	16	23	30		
SAT	2	9	16	23	30	SAT	6	13	20	27	SAT	6	13	20	27	SAT	3	10	17	24			
MAY						JUNE						JULY						AUGUST					
SUN	30	2	9	16	23	SUN	6	13	20	27	SUN	4	11	18	25	SUN	1	8	15	22	29		
MON	31	3	10	17	24	MON	7	14	21	28	MON	5	12	19	26	MON	2	9	16	23	30		
TUE	4	11	18	25	TUE	1	8	15	22	29	TUE	6	13	20	27	TUE	3	10	17	24	31		
WED	5	12	19	26	WED	2	9	16	23	30	WED	7	14	21	28	WED	4	11	18	25			
THU	6	13	20	27	THU	3	10	17	24	THU	1	8	15	22	29	THU	5	12	19	26			
FRI	7	14	21	28	FRI	4	11	18	25	FRI	2	9	16	23	30	FRI	6	13	20	27			
SAT	1	8	15	22	29	SAT	5	12	19	26	SAT	3	10	17	24	31	SAT	7	14	21	28		
SEPTEMBER						OCTOBER						NOVEMBER						DECEMBER					
SUN	5	12	19	26	SUN	31	3	10	17	24	SUN	7	14	21	28	SUN	5	12	19	26			
MON	6	13	20	27	MON	4	11	18	25	MON	1	8	15	22	29	MON	6	13	20	27			
TUE	7	14	21	28	TUE	5	12	19	26	TUE	2	9	16	23	30	TUE	7	14	21	28			
WED	1	8	15	22	29	WED	6	13	20	27	WED	3	10	17	24	WED	1	8	15	22	29		
THU	2	9	16	23	30	THU	7	14	21	28	THU	4	11	18	25	THU	2	9	16	23	30		
FRI	3	10	17	24	FRI	1	8	15	22	29	FRI	5	12	19	26	FRI	3	10	17	24	31		
SAT	4	11	18	25	SAT	2	9	16	23	30	SAT	6	13	20	27	SAT	4	11	18	25			

2010